

## County Council update June 2025

Do contact me any time on:

[gary.luff@gloucestershire.gov.uk](mailto:gary.luff@gloucestershire.gov.uk)

Tel: 07773778050

And please report any Highways defects via [highwayscouncillors@gloucestershire.gov.uk](mailto:highwayscouncillors@gloucestershire.gov.uk) (for parish councillors & clerk use only)– feel free to copy me in if you'd like to – or via the Fix My Street app or <https://fixmystreet.gloucestershire.gov.uk/>

### Local election results for Gloucestershire County Council (now in NO OVERALL CONTROL):



Political Group	No. of councillors
Liberal Democrats	27
Reform	11
Green	9
Conservative	6
Labour	1
Independent	1
<b>Total</b>	<b>55</b>

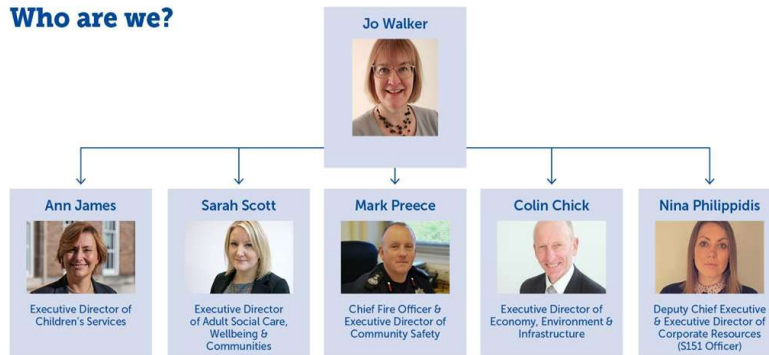
### Results within Stroud District:

Stroud district summary

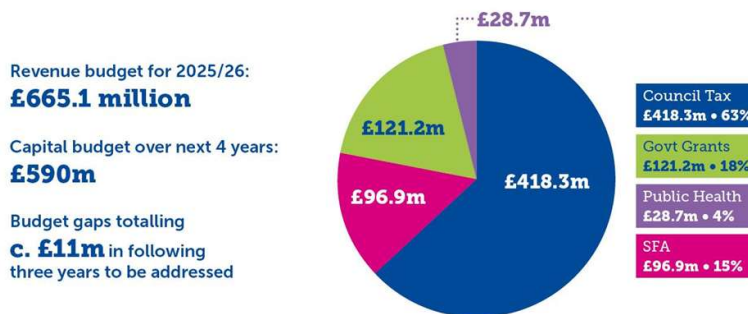
Party	Seats	+/-	Votes	%	+/-
Green	6	▲ 5	12,152	31.1	+10.4
Reform UK	2	▲ 2	8,785	22.5	N/A
Labour	1	▼ 3	6,878	17.6	-10.8
Conservative	1	▼ 3	6,570	16.8	-24.3
Liberal Democrats	1	—	3,727	9.5	+1.5
Independent	0	—	927	2.4	+1.5
TUSC	0	—	58	0.1	±0.0
Socialist (GB)	0	—	25	0.1	N/A
<b>Total</b>	<b>11</b>	<b>▲ 1</b>	<b>39,122</b>		

## New officer leadership team at GCC (from Chief Executive down):

### Who are we?

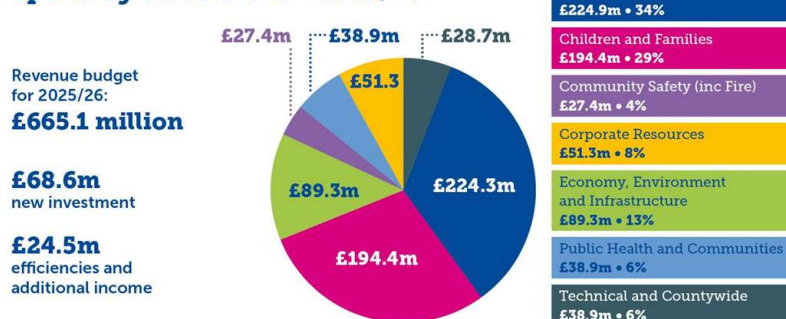


## GCC income for this financial year:



## GCC spend this financial year:

### Spend by directorate - 2025/26



## Other GCC News:

- Residents are being invited to have their say on Gloucestershire's strategy to tackle domestic abuse 2025/28 (survey open until 16<sup>th</sup> June)  
<https://haveyoursaygloucestershire.uk/engagementhq.com/we-want-your-views-on-domestic-abuse>
- GCC's Climate Action Fund has reopened, until 6pm 9<sup>th</sup> June, for applications from £2k to £4,999 <https://www.gloucestershire.gov.uk/planning-and-environment/greener-gloucestershire-dashboard/greener-gloucestershire-community-fund/who-can-apply/>

- Gloucestershire County Council is working with NHS Gloucestershire and the county's housing partners to introduce an Accessible Housing Register (AHR) to help people with disabilities find social housing which meets their needs. Each home on the register is assigned a category from A (most accessible) to G (not yet assessed), indicating the level of accessibility. These categories will be displayed alongside property adverts on Home Seeker Plus, Gloucestershire's housing allocation service. The council has worked with several health and housing organisations to introduce the register which will be launched by Gloucester City Homes in the coming months, followed by Stroud District Council, Cheltenham Borough Homes, Two Rivers and The Guinness Partnership.
- A part of the Fire Kills campaign, Gloucestershire Fire and Rescue Service is asking people to consider their home's escape routes and to make sure their family, guests and loved ones know how to get out, stay out, and call 999 in the event of a fire. If you are concerned about a risk of fire in your home or know someone who you feel is at risk from a fire in their home, please call the advice line 0800 180 4140 or email [SkillzoneCFSTeam@glosfire.gov.uk](mailto:SkillzoneCFSTeam@glosfire.gov.uk). Alternatively, you can use the [online home fire safety check](#).

The cabinet positions at GCC have been allocated and are as follows:

Cllr. Lisa Spivey	Leader of the council
Cllr. Suzanne Williams	Vice Chair
Cllr. Colin Hay	Deputy Leader - Finance, Assets, and Transformation
Cllr. Ben Evans	Children's Safeguarding and Care
Cllr. Kate Usmar	Adult Support and Independence
Cllr. Paul Hodgkinson	Public Health, Communities, and Fire
Cllr. Linda Cohen	Education and Skills
Cllr. Joe Harris	Highways Maintenance
Cllr. Roger Whyborn	Strategic Highways and Sustainable Transport
Cllr. Julian Tooke	Business, Economic Development, Planning, and Infrastructure
Cllr. Martin Horwood	Nature, Waste Reduction, and Climate

These are all Liberal Democrats

The Chair of the Council for 2025/26 is Cllr. Steve Robinson (Labour)

There are several scrutiny committees and the chairs and vice-chairs are detailed below:

	Chair	Vice-chair
Corporate Overview and Scrutiny	Cllr Gary Luff	Cllr Ian Watson
Health	Cllr Iain Dobie	Cllr Ian Cameron
Adult Social Care and Communities	Cllr Rebecca Trimnell	Cllr Richard Dean
Children and Families	Cllr Natalie Rothwell-Warn	Cllr Angie Boyes
Environment	Cllr Sarah Hands	Cllr Beki Hoyland
Economic Strategy	Cllr John Patient	Cllr Mark Harris
Fire and Rescue	Cllr Jeremy Hilton	Cllr Beki Hoyland

Gary Luff is also on the planning, pensions and traffic regulation committees.